



# Glenfield Branch

April 2024

Next Meeting Glenfield Leisure Centre

**Monday 8th April 1.30pm**

*A Very Happy Easter to Everyone*

"Thought of the Day"

"Opportunities don't happen, you create them".

### Greetings

Autumn has arrived and I am told that March normally is a gentle month starting the harvest season. Well things don't seem to be going to plan but thankfully our trip to the gardens was blessed with a super day of sunshine. At our Monday meeting we welcomed a new performer Sasha, a classical guitarist and at one point during his performance he played a particularly heavy sombre piece when the heavens opened with a very heavy tropical downpour. This happened absolutely on cue, drowning not only those who were unfortunate to be outside but loud enough for those at the back not to hear him playing. John

An unforgettable experience with The Bee Lady! Get ready to be fascinated by the intricate world of bees during her engaging presentation where you'll learn about the impact of bees on the ecosystem, why we need them, and how they function. There will even be honey to taste and purchase. This is multi floral, raw honey and comes in 500g pots. Wildflower \$5, Honeycomb 350g \$10, Manuka 50+ mgo \$10 and Manuka 100+ mgo \$15.

Please bring cash for your purchases of Honey.

### FROM YOUR TREASURER

Subscriptions are due in APRIL \$15 per member \$5 of which goes on capitation fees to the National Office. Please complete your yellow slip which is enclosed with this newsletter and return to me for our records. Sometimes your emergency details need to be updated. If you wish to pay online **PLEASE NOT BEFORE 1ST APRIL** the account number is **ANZ 01-0143-0028297-00** details your name.

Once again I thank you for your support. Janet

### DONATION TABLE

**Please don't forget your items for the fundraising table.**  
**Items to donate - metal (not plastic) bottle tops (for KidsCan),**  
**stamps (for Leprosy Mission),**  
**used batteries for your disposal, Home Produce**  
**and Baking which is wrapped for Hygiene purposes.**

### April Birthdays

Parri June McWalter (90) Helen O'meara Don Speedy  
Carol Collins Jan Wood (70) Sue Archer Carole Appleton

**Next Committee meeting Monday 15th April**

### ENTERTAINMENT

Monday 8th April  
at 1.30pm



### MONTHLY LUNCHEON "New Venue"

**Wednesday 24th April**

Luncheon 12 noon at  
Lulu's

(was Hollywood Bakery)  
Link Drive on right hand  
side of Toyota

Phone or Text Gloria on  
**027 478 5599**

### SICK FOLKS

For any member unwell,  
at home or in Hospital,  
please contact  
Ann Hornbuckle  
so a card can be sent.  
Phone (09)948 3998

### HEALTHLINE

**0800 611 116**

Free Health advice when  
you need it.

Glenfield 60's Up Branch Committee

President - John Child 0220 389 842 Treasurer - Janet Keeble (09) 444 4674 Secretary - Carole Appleton (09) 444 5592

Members - Doris Lynch (09) 415 9611 (021) 0972 229 - Sue Archer 021 082 02979 - Maureen Mould (021) 660 817

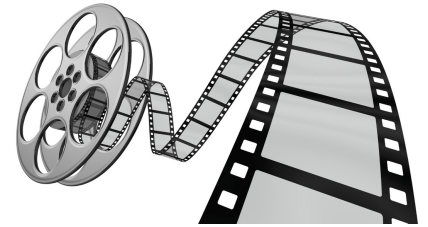
- Gloria Pillinger 027 478 5599 - Ann Hornbuckle (09) 948 3998 - Glenys Kilroy (09) 444 1413

Glenfield Branch



# RYDER'S

Cinema & Restaurant



## Wednesday 17th April

### “BY POPULAR DEMAND”

Ryder's of Avondale has been operating on the family homestead since 1940. Jack Ryder started the Ryder's Estate museum while John Ryder opened the West Wind Cinema Club, with a vision to provide a venue where groups could enjoy a delicious meal together, watch a film of their choice in the private theatre, plus the opportunity to view the Ryder Family's collection of memorabilia and antiques.

Today Clint Ryder continues his grandfather's vision and has built Ryder's into a unique and highly successful function venue.



THE MOVIE SELECTED IS...

## "FISHERMAN FRIEND II"

An amusing film with uplifting music and breathtaking landscapes of the Cornish Coast.

### LUNCH WILL BE AT RYDER'S

Roast lunch with tea and coffee

Book to register your name with Janet as soon as you receive this newsletter or at the meeting on the 8th April. Pay \$45 online prior to the trip or when joining on the bus have the correct money in an envelope with your name on it.

If you would like to pay online please pay into 12-3072-0809697-00. This is for [TRIPS ONLY](#). Please ensure sufficient reference is included in your payment.

**Pick up Points** 9.00 Verrans Corner / Gatman / The Orchards / Peach Road  
9.15 Hall Road / Glenfield Shops  
9.30 Sunnybrae / AUT

**Contact:** Janet (09) 444 4674 (021 135 978) or Doris (09) 415 9611 (021) 0972 229

Our thanks to

windsor  
FUNERALS  
(09)477 2433

for printing this  
Newsletter and

Kaipātiki  
Local Board  
Auckland Council

for subsidising  
our trips.